



CITY OF IRVINE

CAPITAL IMPROVEMENT PROGRAM

TABLE OF CONTENTS

01 Director of Project Delivery & Sustainability

02 Establishing Project Delivery & Sustainability

03 Project Delivery Methods

04 On-Call Contracts

05 The Great Park Project

06 Capital Improvement Program

07 Significant Projects

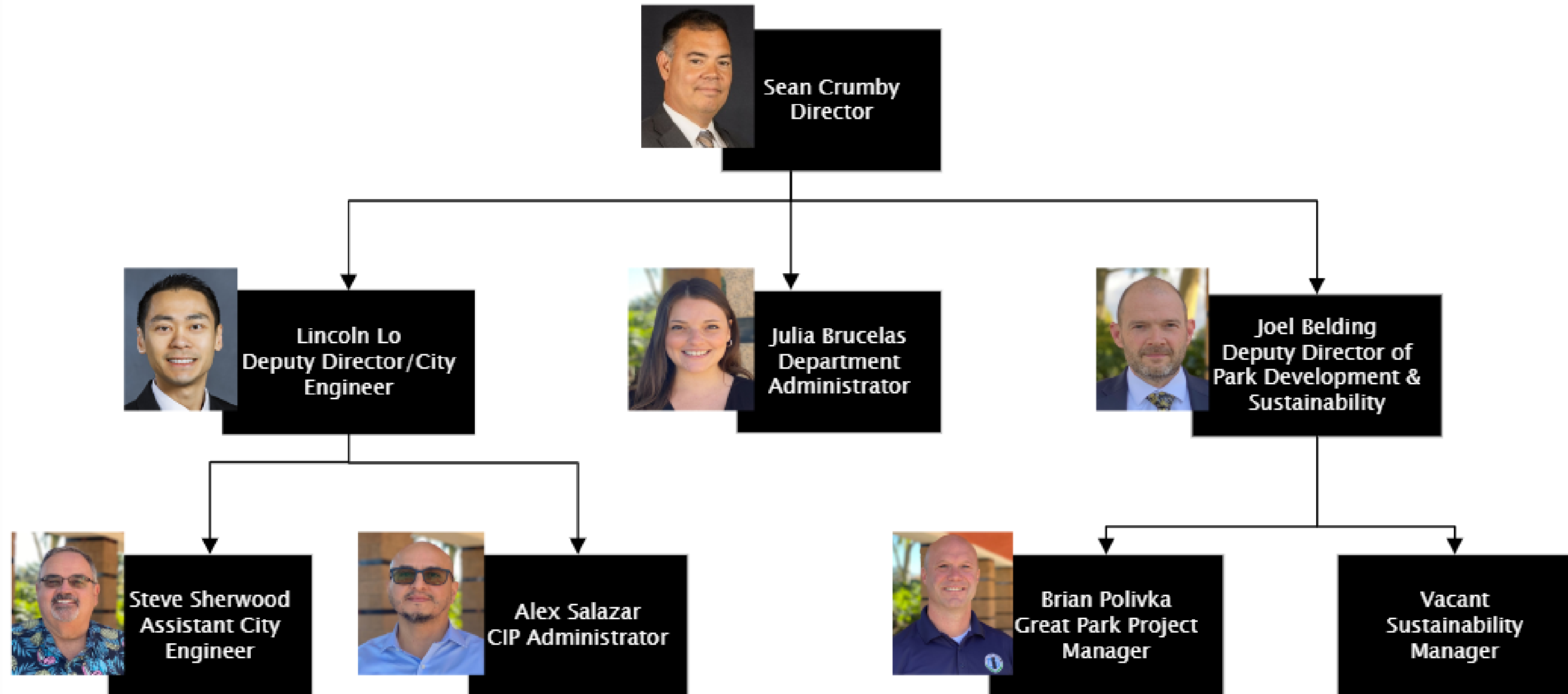
08 Questions



SEAN CRUMBY

- Professional Engineer
- 25 years public sector as Civil Engineer, Director, and Assistant City Manager at organizations including Newport Beach, Stanton, Seal Beach, Long Beach, Huntington Beach, and Irvine
- 5 years private sector civil engineering

PROJECT DELIVERY & SUSTAINABILITY



PROJECT DELIVERY

Capital Improvement Program

The CIP included \$100 million annually in projects. Due to escalating costs, project scope revisions, and CWA implementation, the program required prioritization.

Great Park Framework Plan

The Great Park Framework Plan was approved in July 2022 and includes \$815+ million in park development, including an outdoor amphitheater, lake, botanical garden, veterans memorial, cultural terrace, and food & beverage.

CIP Administration

Beginning in 2023, the City launched an interactive online CIP map and completed an internal analysis to prioritize projects based on available funding sources.



Municipal Code

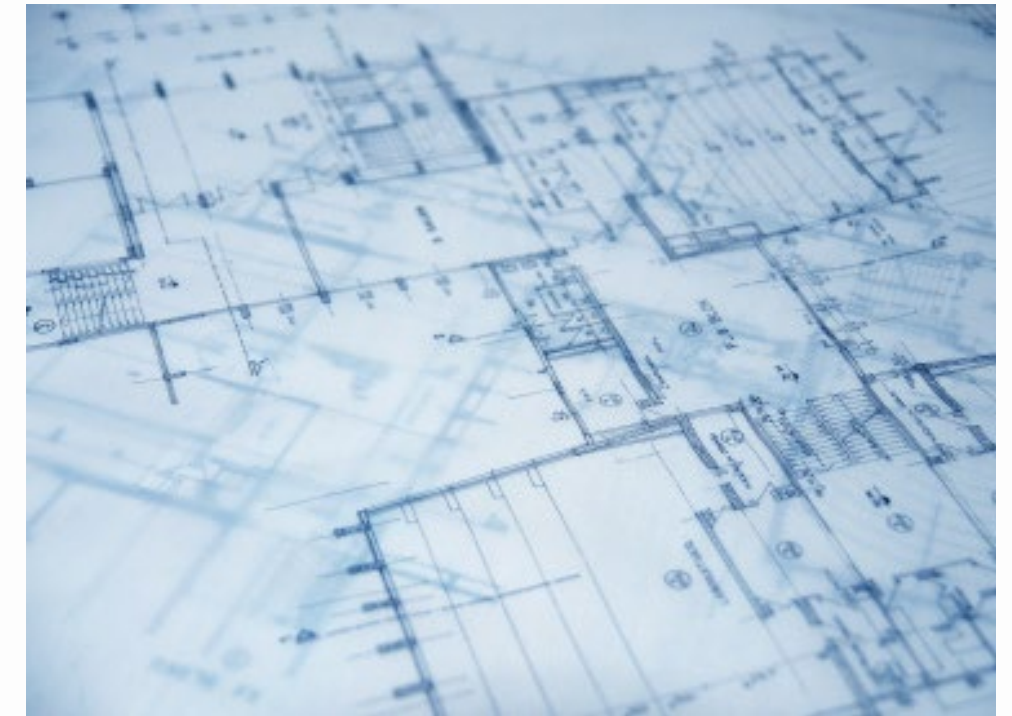
In July 2023, the City Council adopted resolutions removing the requirement for Council to approve Notice Inviting Bids and to delegate the approval of plans & specifications to the City Engineer.

Procurement

In September 2023, PD&S amended financial policy to enhance the project delivery model.

ON - CALL CONTRACTS

In September 2023, PD&S adjusted financial policies related to supplementary Requests for Proposals for the Consultant Team Program. This enhances the delivery schedule for awarding design contracts for capital projects. In 2024, the Consultant Team Program will be replaced with the On -Call Program.



Master Contracts

- 3-Year term
- Optional 2 -Year extension

Solicitation Tiers

- Informal solicitation (1 quote), Under \$200k, Director awards
- Informal solicitation (3 quotes), \$200k-\$999k, City Manager awards
- Formal solicitation (RFP), \$1m+, City Council awards

Contract Amendments

- Projects between \$200k-\$999k require a project specific amendment to the Master Contract

THE GREAT PARK PROJECT

- 01 Botanic Garden & Veterans Memorial
- 02 Arboretum
- 03 Heart of Park
- 04 Lake
- 05 Great Meadow
- 06 Cultural Terrace
- 07 Bridges
- 08 Bosque Enhancements & Extension





PARK DEVELOPMENT



4th Pool at Woollett Aquatic Center

Parks Master Plan



CAPITAL IMPROVEMENT PROGRAM



Active Transportation Plan

Pavement Management Program



CAPITAL IMPROVEMENT PROGRAM



Bridge Prioritization Study

Facility Improvements



JEFFREY OPEN SPACE TRAIL BICYCLE & PEDESTRIAN BRIDGE



The JOST, located adjacent to Jeffrey Road, is an important recreational trail in the City of Irvine's overall trails and open space systems. The JOST has two existing gaps which the City is looking to connect, which will link trails that extend from the Pacific Ocean to the Santa Ana Mountains. One of those gaps lies along the JOST at I-5 freeway. This project will close the gap with a Class 1 Bicycle & Pedestrian Bridge.

Construction is estimated to begin February 2023 and the project will be delivered by the end of 2025.

IRVINE CIVIC CENTER EXPANSION & Bill Barber Community Park Gymnasium



The City is contemplating an expansion of the Irvine Civic Center, which shares a parking lot with the adjacent community park. Concurrently, conceptual plans for the construction of a gymnasium at the park are underway. In addition, the City is considering entering into a Power Purchase Agreement to install and maintain solar over both the main and secure parking lots.

Conceptual design is underway and final design is estimated to begin Fall 2024.



QUESTIONS

E-mail scrumby@cityofirvine.org

Website www.cityofirvine.org

Phone 949-724-6070