

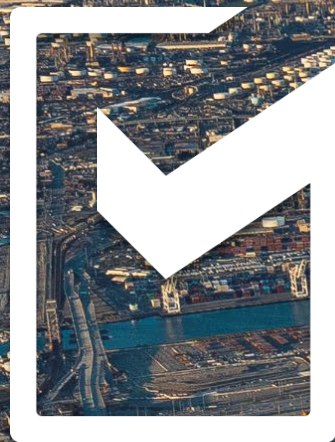


# *Meet the Port of Long Beach*

Clint Herrera, P.E.,  
Director of Engineering Design

*ACEC - Orange County*

*August 21, 2024*



Port of  
**LONG BEACH**  
THE GREEN PORT

## AT A GLANCE

- Founded in 1911
- Second-busiest U.S. port
- Leader in seaport sustainability with award-winning Green Port Policy
- \$200 billion in trade annually
  - \$46.6 billion in annual tax revenue contributions
  - Uses no tax revenue to operate
- 2.6 million U.S. jobs
  - 575,000 in Southern California
  - 51,090 jobs in Long Beach
- 11.9 square miles
  - 31 miles of waterfront
  - Six container terminals
  - 76 gantry cranes
  - 80 berths



# FY 2023 - AWARDS RECEIVED

**Freeboat Station No. 15** ASCE Estuary Section of the Year Award  
Specialty Construction

...AWARD-WINNING

**Double Track Access from  
Pier G to Bridge** 2022 John L. Martin Partnered  
Charging Depot Project of the Year  
Transportation Project Regional  
Outstanding Port Project 2023

**Pier E Berth E22  
Backlands Phase 3  
Ocean Blvd Coastal Bike Trail  
Connector** Project of the Year Award  
2023 California Engineering  
Ports Project  
Excellence Award

**Pier E Administration Building** 2022 John L. Martin  
Partnered Project of the Year

**Pier E South Exchange  
Battery Building** 2023 California Engineering  
Excellence Award



# “OWNER OF CHOICE”

ENR California has chosen the Port of Long Beach as the 2024 Owner of the Year.

TOP STARTS ■ ENR CALIFORNIA OWNER OF THE YEAR



## Pursuing New Paradigms To Meet Lofty Goals

The Port of Long Beach, ENR California's Owner of the Year, aims to set a new standard for seaport efficiency and sustainability **BY JIM PARSONS**

### MASSIVE GUESTS

The Port of Long Beach's waterways are able to host some of the world's largest container ships. A \$200-million navigation channel deepening project set to start in 2027 will expand that capability.

**Is it possible** to be one of the nation's largest and most efficient multimodal seaports and also the greenest?

The Port of Long Beach is committed to proving that achieving such lofty, sometimes competing goals is not only possible, it's also practical.

Already handling trade valued at \$200 billion per year—and approximately 20% of all loaded containers moving through U.S. ports—the Port of Long Beach has in recent years invested billions in modernizing existing facilities and infrastructure with sustainably sound features such as integrated shoreside power for berthed vessels, dozens of charging stations across its

3,520-acre landside property for heavy-duty electric vehicles and upgraded land access with the nation's second-tallest cable-stayed bridge.

Each effort contributes to an overarching aim to become the world's first zero-emission seaport, a goal expressed earlier this year by port CEO Mario Cordero.

Now the port is set to invest \$2.4 billion over the next decade in a capital program that aims to maximize rail transportation's efficiency and environmental benefits. The effort begins with the expected summer 2024 start of construction on the centerpiece \$1.5-billion Pier B On-Dock Rail Support Facility, which will

# WE ARE THE GREEN PORT





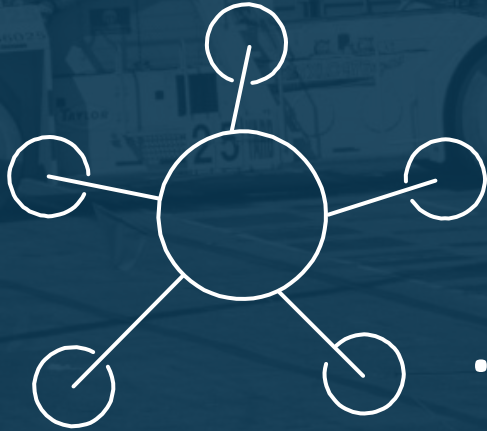
## OUR VISION

The Port of Long Beach will be the global leader in operational excellence and environmental stewardship.

## OUR MISSION

The Port of Long Beach is an international gateway for the reliable, efficient and sustainable movement of goods for the benefit of our local and global economies.

**Who We Are...**



**...How We Are Organized**

**What We Do...**



EXECUTIVE OFFICER TO THE BOARD  
ASST EXECUTIVE OFFICER TO THE BOARD  
COMMISSION ADMINISTRATIVE OFFICER

## LONG BEACH BOARD OF HARBOR COMMISSIONERS

PRESIDENT  
Bonnie Lowenthal

VICE PRESIDENT  
Frank Colonna

COMMISSIONER  
Steve Neal

COMMISSIONER  
Sharon L. Weissman

COMMISSIONER  
Bobby Olvera Jr.

CHIEF EXECUTIVE OFFICER  
Mario Cordero

CHIEF OPERATING OFFICER

HUMAN RESOURCES  
Khristina



Port of  
**LONG BEACH**  
THE PORT OF CHOICE

ENT

CAPITAL PROGRAMS  
EXECUTIVE  
(Vacant)

OFFICER OF DIVERSITY,  
EQUITY, INCLUSION,  
& PROCUREMENT  
(Vacant)

COMMERCIAL SERVICES BUREAU

Casey Hehr

FINANCE & ADMIN BUREAU

Managing Director  
Sam Joublat

Eleanor Torres

ING SERVICES BUREAU

Managing Director  
Sean Gamette

PLANNING & ENVIR AFFAIRS BUREAU

Managing Director  
Heather Tomley

BUSINESS DEVELOPMENT  
Roger Wu

FINANCE  
Wei Chi

COMMUNICATIONS  
(Vacant)

CONSTRUCTION MGT  
Darrin Lambrigger

PROGRAM MGT  
Monique Lebrun

ENVIRONMENTAL PLANNING  
Renee Moilanen

INFORMATION MGT  
Nyariana Maiko

REAL ESTATE  
Eamonn Killeen

GOVERNMENT RELATIONS  
Adrian Granda

DESIGN  
Clint Herrera

PROJECT CONTROLS  
Ashley Morteboy

PORT PLANNING  
Theresa Dau-Ngo

SECURITY  
Ryan Manning

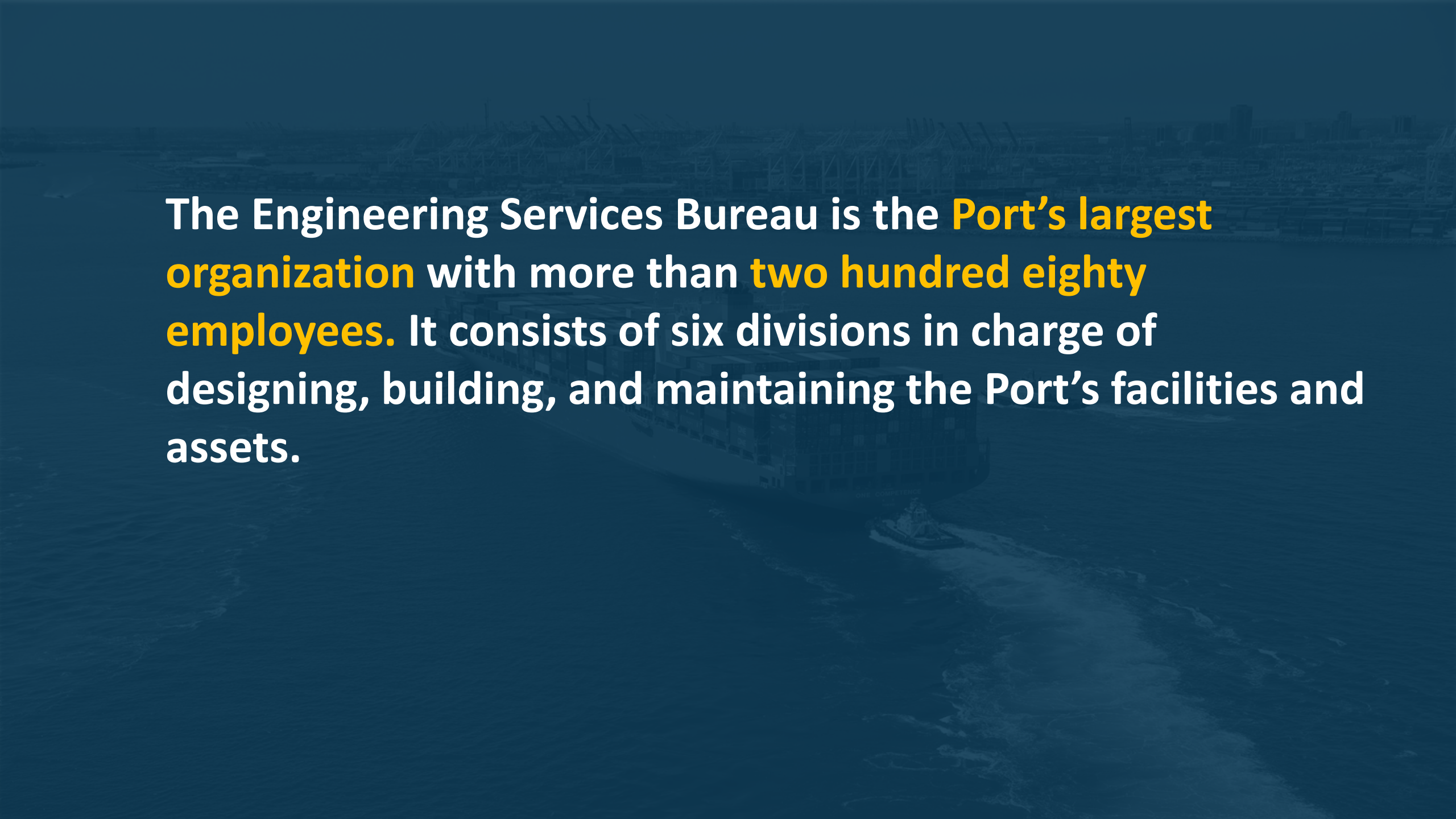
RISK MANAGEMENT  
(Vacant)

MAINTENANCE  
Fred Greco

SURVEY  
Kim Holtz

TENANT SERVICES  
Rafael Delgado

# City of Long Beach Harbor Department – Organizational Structure Chart

The background image is a dark, blue-toned photograph of a port. In the foreground, a large container ship is visible, moving through the water and leaving a white wake. In the background, several large port cranes are visible, and a city skyline can be seen in the distance. The overall atmosphere is industrial and maritime.

The Engineering Services Bureau is the **Port's largest organization** with more than **two hundred eighty employees**. It consists of six divisions in charge of designing, building, and maintaining the Port's facilities and assets.

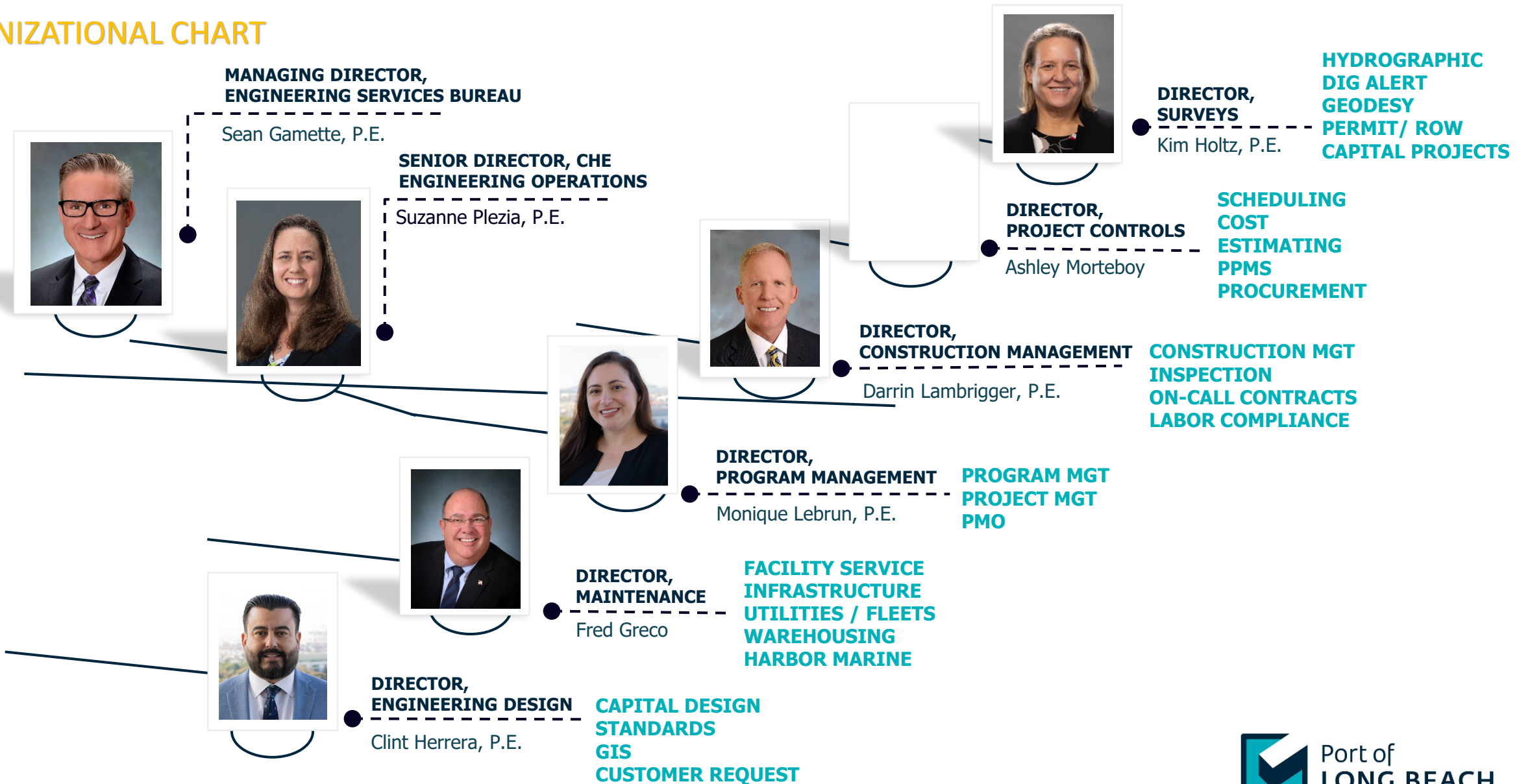
# ENGINEERING SERVICES BUREAU

## MISSION

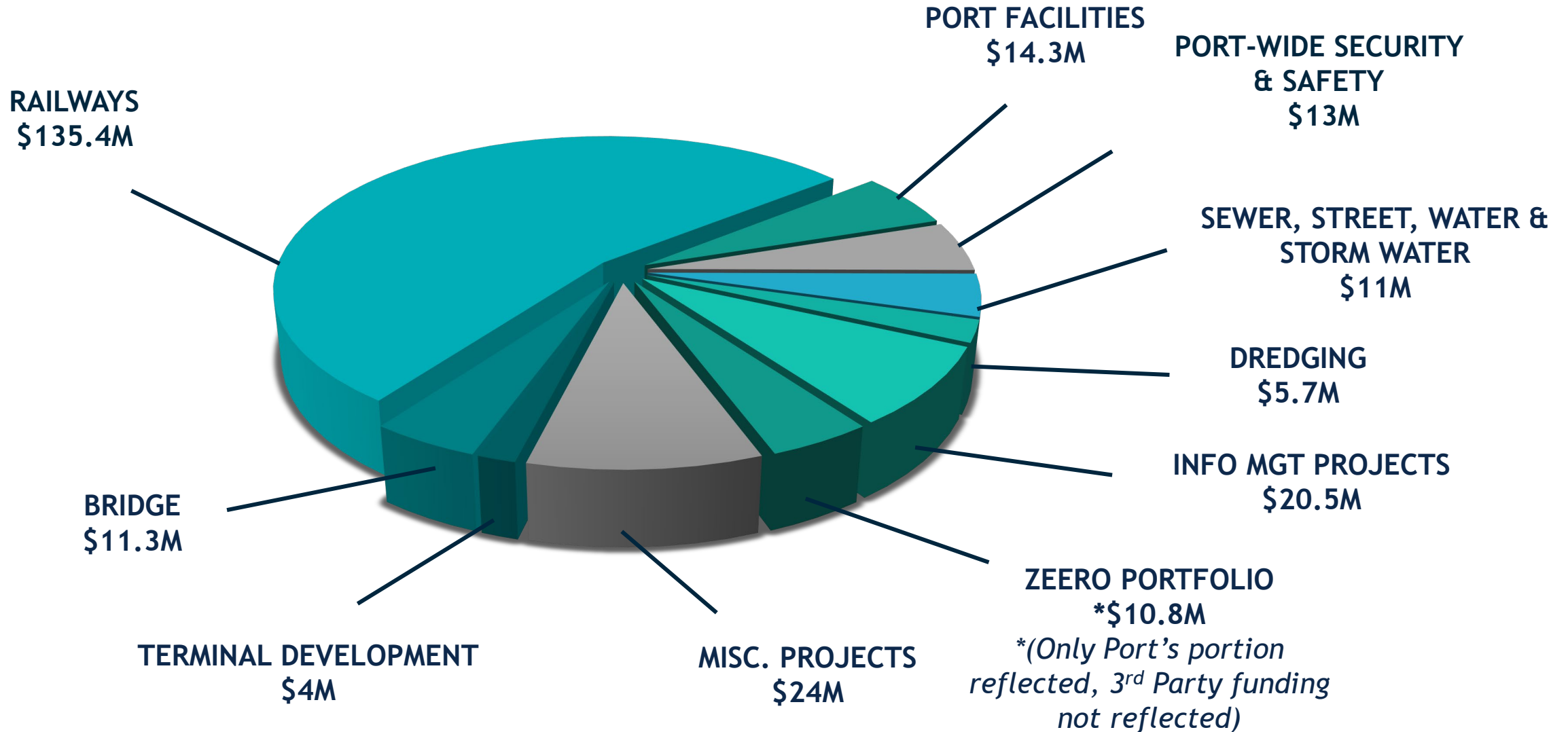
**Working Together** to proactively design, build, and maintain state of the art infrastructure and assets to support safe, reliable, and efficient goods movement in an environmentally and fiscally responsible way.

# ENGINEERING SERVICES BUREAU

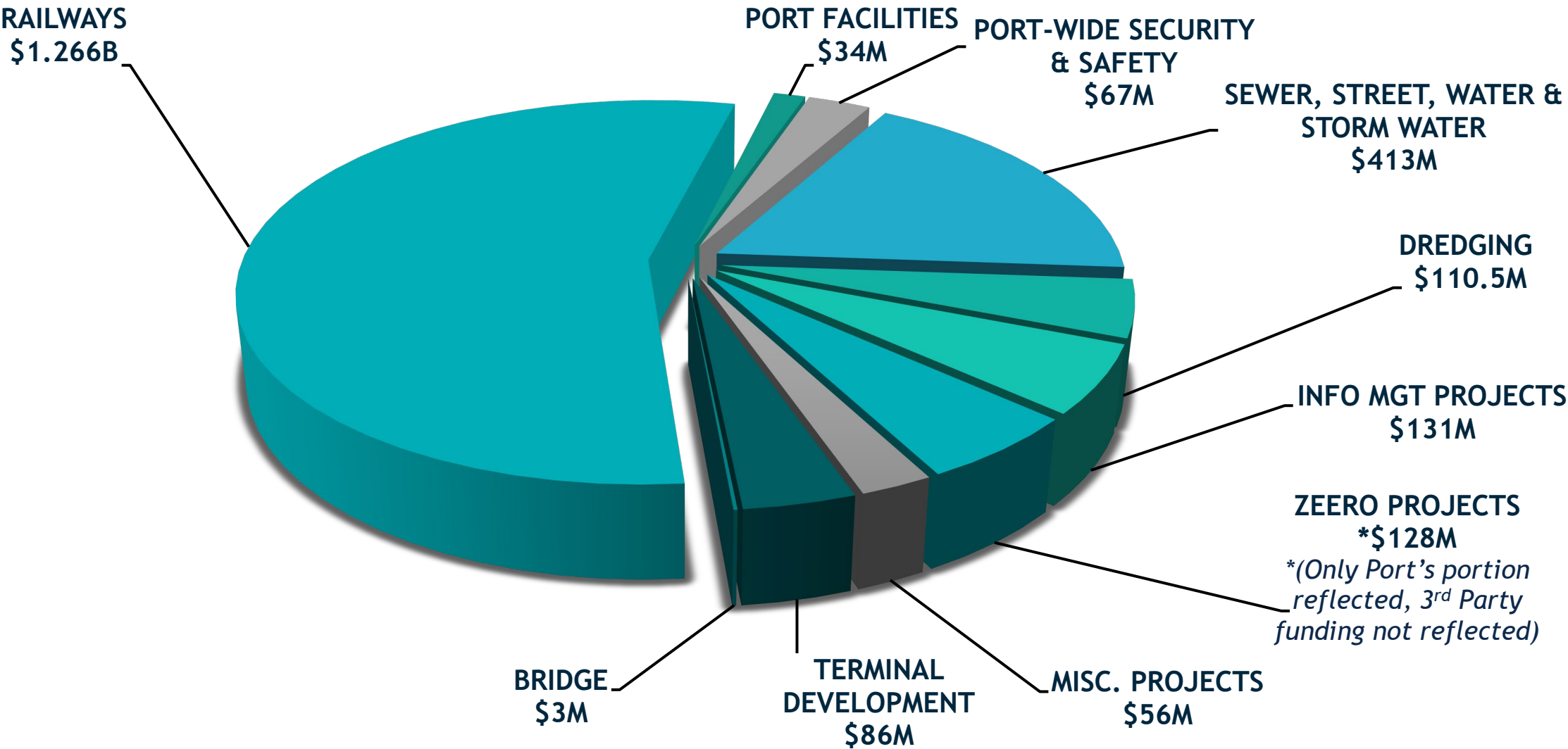
## ORGANIZATIONAL CHART



# FY 2024 BOARD ADOPTED CAPITAL PROGRAM BUDGET \$250 MILLION



# 10 YEAR CAPITAL PROGRAM FORECAST (FY 2024 - 2033) \$2.3 BILLION



An aerial photograph of a large port and city. The port is filled with shipping containers, cranes, and large ships. The city is densely packed with buildings and roads. The water is a deep blue, and the sky is a lighter blue. The text "ENGINEERING DESIGN" is overlaid in the center in a large, white, sans-serif font.

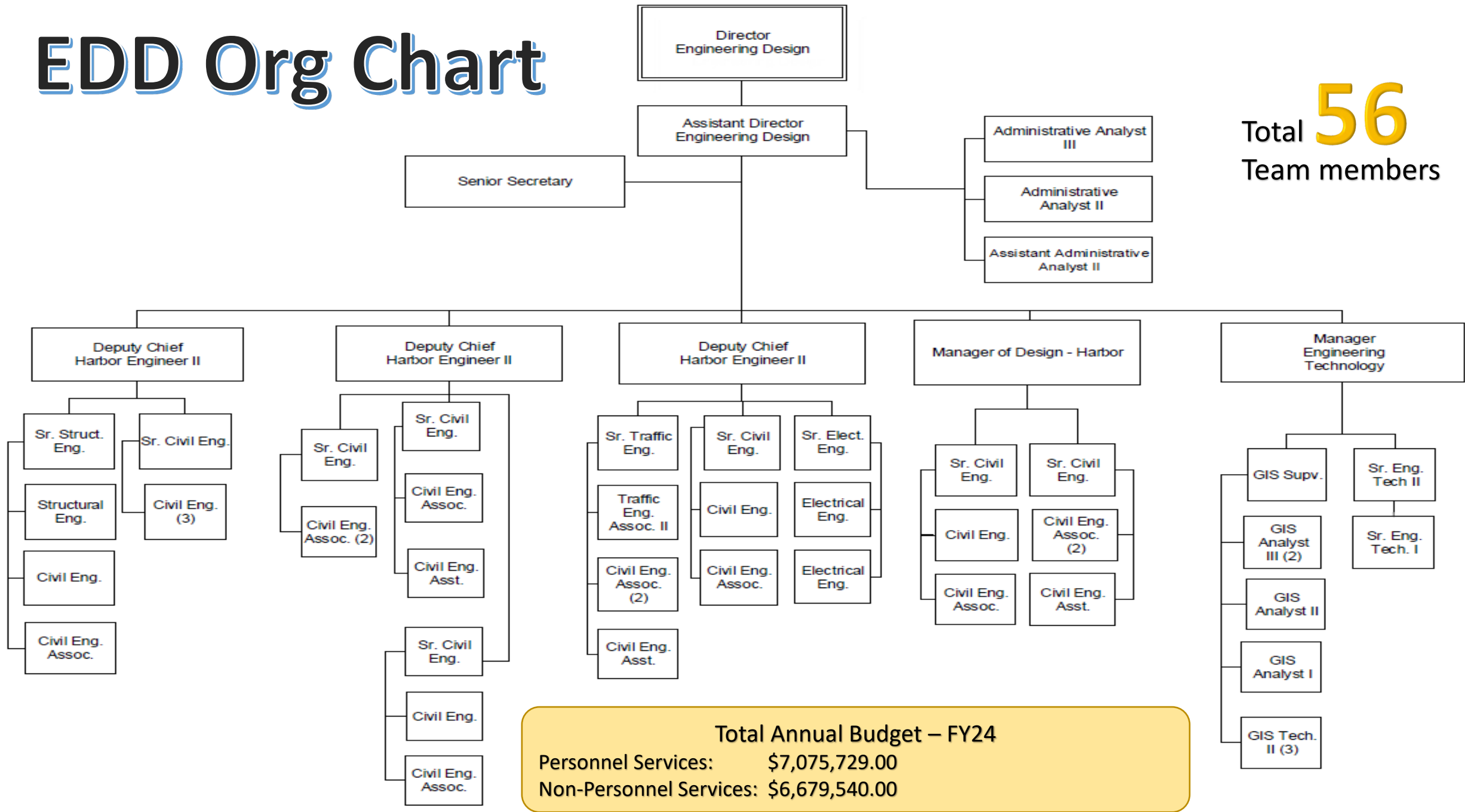
# ENGINEERING DESIGN

# EDD MISSION STATEMENT

Working together to deliver quality engineering design services for the Port's infrastructure and assets through collaboration, innovative technology, and setting the standards of excellence for now and into the future

# EDD Org Chart

Total **56**  
Team members





**TERMINAL DEVELOPMENT**



# ROADWAYS AND BRIDGES



**WATERWAYS**



# PUBLIC WORKS



# SAFETY AND SECURITY



**ON-DOCK RAIL**



**PIER WIND**

# UNIQUE QUALITIES OF PORT OF LONG BEACH

STATE'S LARGEST SKILLED  
MARINE, MANUFACTURING,  
AND CONSTRUCTION  
WORKFORCE

PART OF LARGEST  
INDUSTRIAL PORT  
COMPLEX IN THE NATION

FEDERAL  
BREAKWATER

HARBOR DISTRICT

CENTER OF US SUPPLY CHAIN  
WITH EXTENSIVE ROAD, RAIL,  
AND MARINE TRANSPORTATION  
NETWORKS AND SUPPLY  
CHAIN LOGISTICS

NO AIR HEIGHT  
RESTRICTIONS

INDUSTRY LEADER IN  
DEVELOPING LARGE MARINE  
INFRASTRUCTURE

-40' to -70'  
DEEP

-76' MAIN CHANNEL



TRANSPORTATION  
CORRIDOR

WET STORAGE

SINKING BASIN

FIXED PIERS

7,500 FT HEAVY LIFT  
CAPACITY WHARF

-76' MAIN CHANNEL

WET STORAGE

CONCEPT DESIGN

[Pier Wind Concept Report](#)

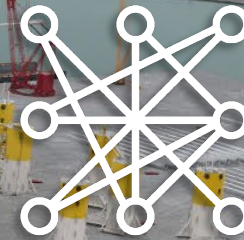
# BENEFITS SUMMARY

Positions California and the United States to be at the forefront of floating offshore wind innovation and development

US Goal of 15 GW BY 2035

CA Goal of 25 GW BY 2045

# SCALE



Greenhouse Gases  
Cost of Energy



## LARGEST PURPOSE-BUILT OFFSHORE WIND FACILITY

A large-scale construction site, likely a port or industrial facility, with multiple cranes and workers visible in the background. In the foreground, two workers in high-visibility vests are working on a grid of rebar. The image is overlaid with a dark blue filter.

# CURRENT AND UPCOMING OPPORTUNITIES

---

# CONSULTING OPPORTUNITIES

*PlanetBids*

27% SBE/VSBE

BUSINESS OPPORTUNITIES

<https://polb.com/business/business-opportunities/>

**PUBLIC CHARGING FACILITIES FOR HEAVY DUTY DRAYAGE TRUCKS**

ADVERTISE: LIVE

**PROJECT LABOR AGREEMENT ADMINISTRATIVE SUPPORT**

ADVERTISE: LIVE

**AIR MONITORING STATION OPERATION, MAINTENANCE, AND PROJECT MANAGEMENT**

ADVERTISE: LIVE

**LONG-TERM CARGO FORECAST**

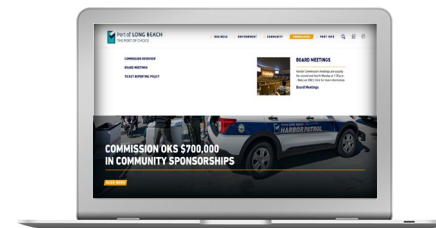
ADVERTISE: LIVE

**PIER B ON DOCK RAIL PROGRAM CONSTRUCTION MANAGEMENT SERVICES**

ADVERTISE: LIVE

**PIER D BERTHS 35-37 BACK CHANNEL BULKHEAD REPLACEMENT DESIGN**

ADVERTISE: Q3 2024



# CONSULTING OPPORTUNITIES

*PlanetBids*

27% SBE/VSBE

BUSINESS OPPORTUNITIES

<https://polb.com/business/business-opportunities/>

**CALSTA GRANT INCENTIVE PROGRAM**

ADVERTISE: Q3 2024

**ON-CALL RECRUITING**

ADVERTISE: Q3 2024

**TRASH, DEBRIS, AND LITTER SERVICES**

ADVERTISE: Q3 2024

**WINDOW AND SOLAR PANEL CLEANING**

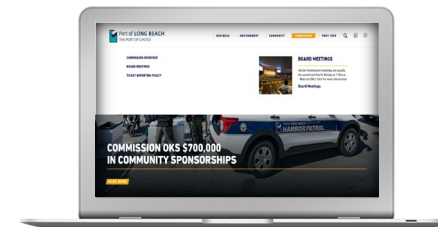
ADVERTISE: Q3 2024

**FUEL ISLAND COMPLIANCE, MAINTENANCE AND REPAIR**

ADVERTISE: Q4 2024

**GENERATOR MAINTENANCE AND REPAIR**

ADVERTISE: Q4 2024



# CONSULTING OPPORTUNITIES

*PlanetBids*

27% SBE/VSBE

BUSINESS OPPORTUNITIES

<https://polb.com/business/business-opportunities/>

HYDRAULIC LIFT MAINTENANCE AND REPAIR

ADVERTISE: Q4 2024

ROOF MAINTENANCE AND REPAIR

ADVERTISE: Q4 2024

PORT TARIFF UPDATE SERVICES

ADVERTISE: Q4 2024

ON-CALL PRINTING SERVICES

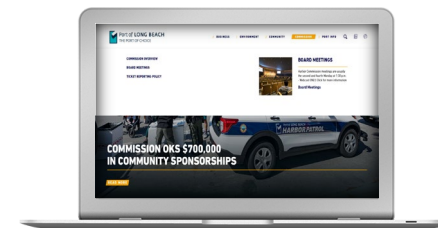
ADVERTISE: Q4 2024

ON-CALL VIDEO PRODUCTION

ADVERTISE: Q4 2024

AIR EMISSIONS INVENTORIES

ADVERTISE: Q4 2024



# CONSULTING OPPORTUNITIES

*PlanetBids*

27% SBE/VSBE

BUSINESS OPPORTUNITIES

<https://polb.com/business/business-opportunities/>

**TECHNOLOGY ADVANCEMENT PROGRAM UNDER CAAP**

ADVERTISE: Q4 2024

**EMPLOYEE TRAINING AND EDUCATION SUPPORT**

ADVERTISE: Q4 2024

**SCADA ADVISORY SERVICES & SYSTEMS MAINTENANCE**

ADVERTISE: Q4 2024

**SEWER INFRASTRUCTURE ASSESSMENT STUDY**

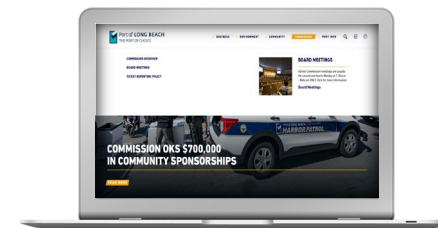
ADVERTISE: Q4 2024

**STORMWATER INFRASTRUCTURE ASSESSMENT STUDY**

ADVERTISE: Q4 2024

**REAL ESTATE SERVICES**

ADVERTISE: Q4 2024



# CONSULTING OPPORTUNITIES

*PlanetBids*

27% SBE/VSBE

BUSINESS OPPORTUNITIES

<https://polb.com/business/business-opportunities/>

**PORT RAIL OPERATOR (JOINT WITH PORT OF LOS ANGELES)**

ADVERTISE: Q4 2024

**LA-04 PUMP STATION CONSTRUCTION MANAGEMENT SERVICES**

ADVERTISE: Q1 2025

**ON-CALL CONSTRUCTION MANAGEMENT SERVICES**

ADVERTISE: Q2 2025

**ON-CALL TESTING AND INSPECTION SERVICES**

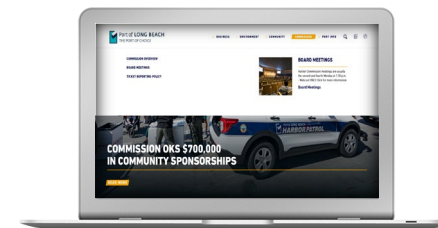
ADVERTISE: Q2 2025

**PIER G CUSTOMER SURVEY AND REPORT**

ADVERTISE: Q2 2025

**PRE-EMPLOYMENT BACKGROUND AND  
INVESTIGATION SERVICES**

ADVERTISE: Q2 2025



# PORT OF LONG BEACH SBE /VSBE PROGRAM



The Port has 27% Annual Department-wide Goal  
SBE/ VSBE UTILIZATION FY 2023

SBE/ VSBE: **37.1%**

VSBE: **19.8%**

ALL OTHER CONTRACTS  
(excluding Maintenance)

SBE/ VSBE: **46.6%**

VSBE: **5.4%**

CONSTRUCTION CONTRACTS  
(including Maintenance)



Port of  
**LONG BEACH**  
THE PORT OF CHOICE

THANK YOU

